



Meadowlark 16-Inch Water Main Replacement
Solicitation Number: CO-00345-FG
Job No.: 18-4012

ADDENDUM #1
July 27, 2020

To Bidder of Record:

This addendum, applicable to work referenced above, is an amendment to the bid proposal, plans and specification and such will be a part of and included in the Contract Documents. Acknowledge receipt of this addendum by entering the Addendum number and issue date on the space provided in submitted copies of the bid proposal.

RESPONSES TO QUESTIONS

1. Question: This job is calling out for the HDPE Pipe to be DIPS. Will the Contractor be allow to connect directly to the MJ Ductile Fittings and MJ Gate Valves without needing any MJ Adapters or SS Inserts?

Response: Contractor will be required to connect HDPE Pipe (DIPS) to MJ Ductile Iron Fittings and MJ Gate Valves by utilizing the appropriate MJ Adapters and SS Inserts (i.e.; Pipe Stiffeners).

2. Question: What brands and models will SAWS allow to use for the Service Saddles that are needed for the Service Relays?

Response: Per current SAWS material specifications for service saddles, the following brands and models for service saddles that are needed for relays will be allowed for use:

Approved Manufacturers and Models:

<u>Manufacturer</u>	<u>A-range Model (C900, C905,DI)</u>	<u>B-Range Model (AC)</u>
AY McDonald	3846	3826/3846
Romac Industries, Inc.	202BS	202BS
Smith-Blair, Inc.	323 W/Wide Strap 304SS	323/323/W/Wide Strap 304SS
Ford Meter Box Co., Inc.	202BS	202B/202BS
James Jones Co.	J969	J979/J969
Mueller Co.	BR2S	BR2B/BR2S



3. Question: Regarding the pipe material for the Horizontal directional drill, Can 14” DR 18 Fusible PVC Pipe be used in lieu of 16” DIPS DR 11 HDPE?

Response: The contract calls for the use of 16” DR 11 HDPE (DIPS) pipe. Fusible PVC pipe is not acceptable or approved by SAWS.

4. Question: I am aware that we are responsible for the ROW Permit, and the Lane/Sidewalk Closure permit. Is that correct? Are there any other permits that we may need?

Response: Correct. A tree permit may be required if the conditions of the CoSA Arborist Letter of Memorandum are not met.

CHANGES TO THE SPECIFICATIONS

1. Not applicable for this addendum.

CHANGES TO THE PLANS

1. Sheet 5 of 28 Revision 1:

- a. Removed 16” Gate Valve and 6” Valve Box from Sta 10+00. Install 16” Gate Valve and 6” Valve Box at Sta 10+26.70 on branch line.
- b. Moved 16” Gate Valve and 6” Valve Box at Sta 10+26.70 from north side of Tee to south side of Tee.

END OF ADDENDUM

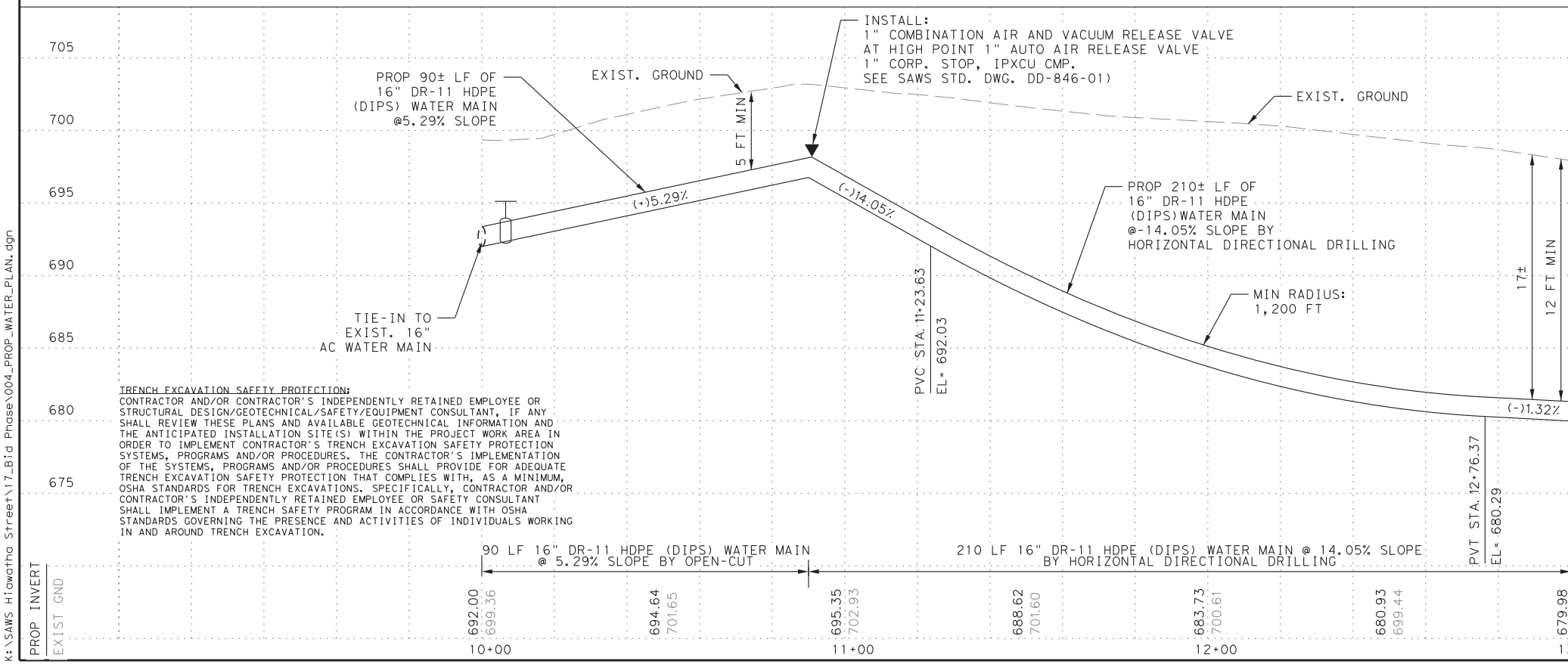
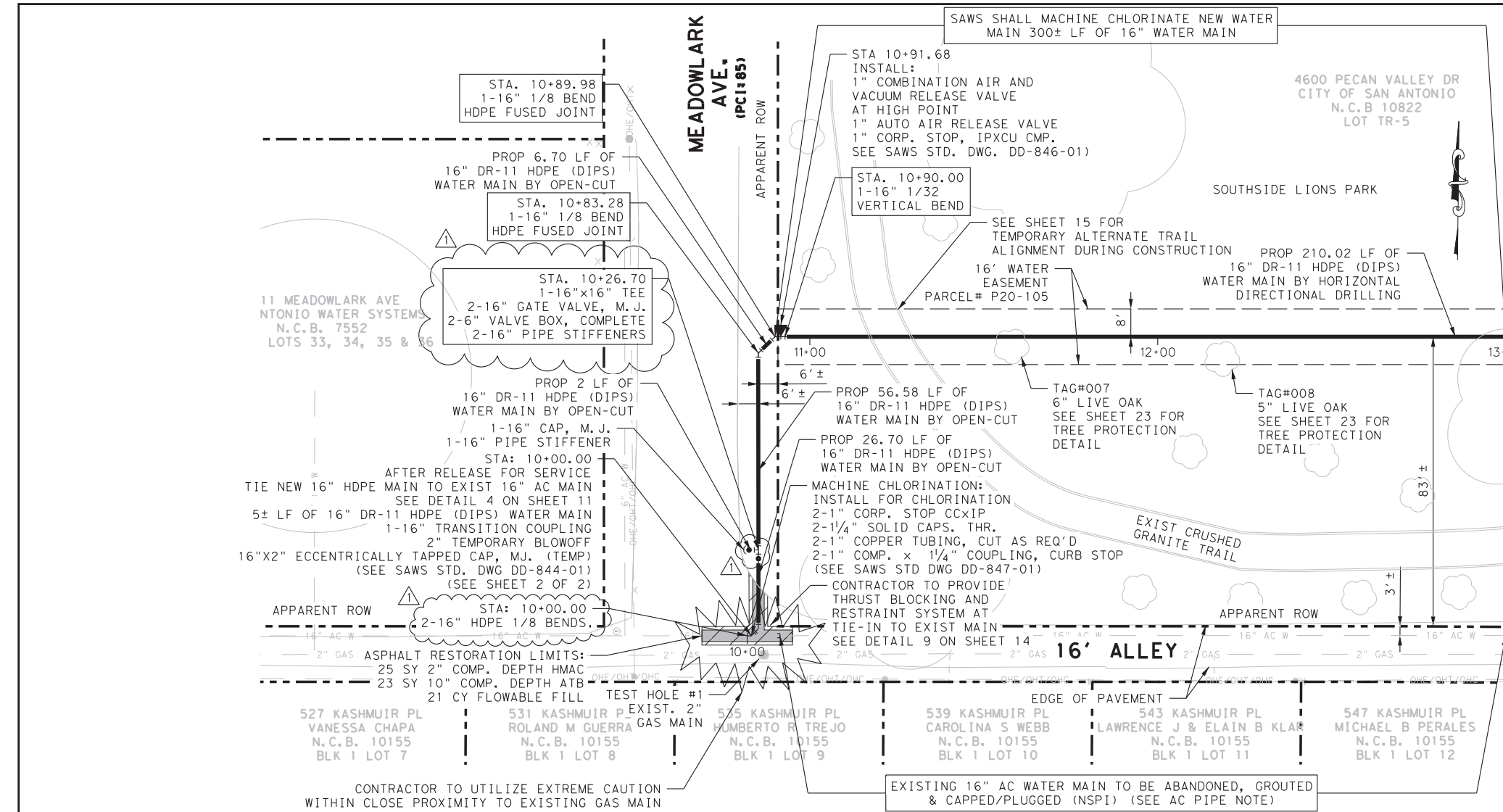
This Addendum, including these two (2) pages, is three (3) pages with attachments in its entirety.

Attachments:

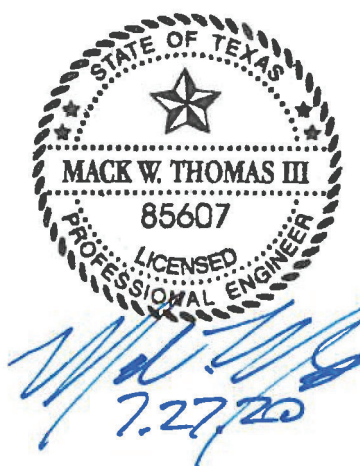
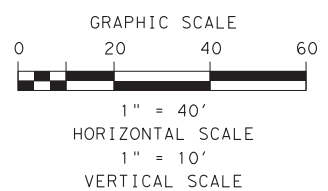
Sheet 5 of 28 – 16-INCH WATER PLAN SOUTHSIDE LIONS PARK (BEGINNING – STA 13+00.00)



7/27/2020 1:57:10 PM
K:\SAWS Hiawatha Street\IT_Bid Phase\004_PROP_WATER_PLAN.dgn



ITEM NO.	DESCRIPTION	UNIT	QUANTITY
205.4	HOT MIX ASPHALTIC PAVEMENT - TYPE D (2" COMPACTED DEPTH) (COSA SPEC)	SY	25
206.1	ASPHALT TREATED BASE (ATB) (10" COMPACTED DEPTH) (COSA SPEC)	SY	23
413.1	FLOWABLE BACKFILL (LOW STRENGTH) (COSA SPEC)	CY	21
550	TRENCH EXCAVATION SAFETY PROTECTION	LF	97
828	16" GATE VALVE, M.J. W/BOX, COMPLETE	EA	2
836	PIPE FITTINGS, ALL SIZES AND TYPES	TON	0.2
840	16" WATER TIE-IN	EA	1
844	2" (TEMPORARY) BLOW-OFF ASSEMBLY	EA	1
846	COMBINATION AIR RELEASE VALVE ASSEMBLY	EA	1
3000	REMOVAL, TRANSPORTATION AND DISPOSAL OF VARIOUS SIZES OF A.C. PIPE	LF	26
SP.1	HORIZONTAL DIRECTIONAL DRILLING (16" WATER LINE)	LF	210
SP.2	GROUT ABANDONMENT OF WATER MAIN (16")	LF	212
SP.815	16" DR-11 HDPE (DIPS) WATERLINE (OPEN-CUT)	LF	97
SP.815	16" DR-11 HDPE (DIPS) WATERLINE (HORIZ. DIRECTIONAL DRILLING)	LF	210



NOTE:
THE SUGGESTED DIRECTION FOR HORIZONTAL DIRECTIONAL DRILLING OPERATIONS IS UPSTATION FROM STA 10+90.00 TO STA 27+06.93.

ASBESTOS CEMENT PIPE CONNECTIONS & REMOVAL NOTE:
ASBESTOS CEMENT (A.C.) PIPE, ALSO KNOWN AS TRANSITE PIPE AND WHICH IS KNOWN TO CONTAIN ASBESTOS CONTAINING MATERIAL (ACM), IS LOCATED WITHIN THE PROJECT LIMITS. SPECIAL WASTE MANAGEMENT PROCEDURES AND HEALTH SAFETY REQUIREMENTS WILL BE APPLICABLE WHEN REMOVAL AND/OR DISTURBANCE OF THIS PIPE OCCURS. PAYMENT FOR SUCH WORK IS TO BE MADE UNDER SPECIFICATION ITEM NO. 3000, "HANDLING ASBESTOS CEMENT PIPE".

LEGEND	
PROP. WATER MAIN	
EXIST. WATER MAIN	
EXIST. SAN. SEWER	
EXIST. STORM MAIN	
EXIST. GAS	
OVERHEAD ELECTRIC/ TELEPHONE/CABLE	
OVERHEAD CABLE	
EXIST. WATER METER	
DUAL BRANCH SERVICE	
NEW UNMETERED SERVICE:	
3/4" SINGLE	
1" DUAL	
SERVICE RECONNECT:	
3/4"	
1" OR LARGER	
SERVICE RELAY:	
3/4"	
1" OR LARGER	
SERVICE RELOCATE	
3/4"	
1" OR LARGER	
NEW SERVICE:	
3/4"	
1" OR LARGER	
RELOCATE METER	
CONCRETE ENCASEMENT	
EXIST. CONCRETE WALKING TRAIL	

100% SUBMITTAL

GD 4800 FREDERICKSBURG RD. SUITE 200SL
SAN ANTONIO, TX 78229
P:210-208-9400 F:210-208-9401
GONZALEZ DE LA GARZA TBPE No. F-10015 • TBPLS No. 10193922
ENGINEERS CONTRACTORS SURVEYORS

NO.	REVISION	DRAWN	APPROVED	DATE

REVISIONS

SA MEADOWLARK 16-INCH WATER MAIN REPLACEMENT 16-INCH WATER PLAN SOUTHSIDE LIONS PARK (BEGINNING - STA 13+00.00)

DEVELOPER: _____
CONT. BUDGET PROJ.
SUBMITTED _____
APPROVED _____

MAP No.	SHEET
SECT. No.	5
DR. CD CK. GR	JOB No. 18-4012
	Of 28